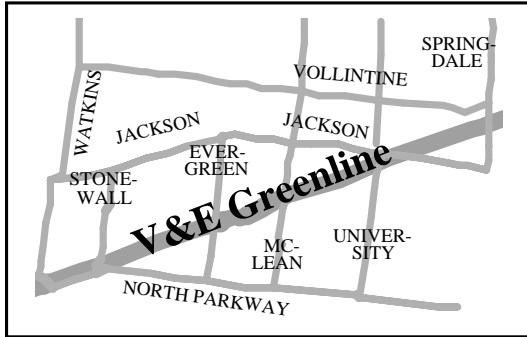
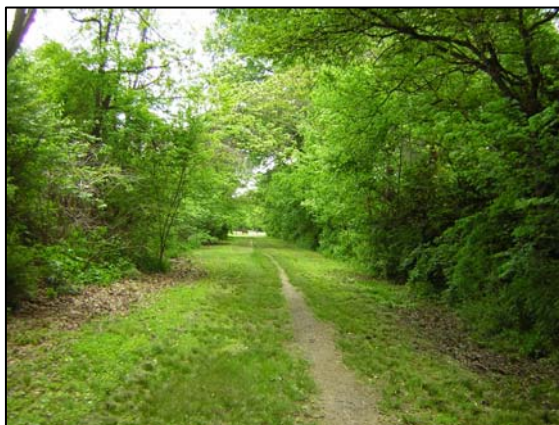


V&E Greenline

The land for the V&E Greenline was purchased on November 11, 1996 from the L&N Railroad successors, which owned the tracks for 150 years. It is owned by the community, maintained by volunteers, and supported by contributions from users, residents, several neighborhoods, businesses, and people from outside the city.



The V&E Greenline is a rails-to-trails community park used for running, walking, dog exercising, gardening, and bicycling. It provides opportunities for recreation, exercise, healthy living, neighborng, and enjoying nature. It has thousands of trees, two creeks with unique bridges, and interesting landscapes—the Cut section below is a deep ravine, while the Springs section to the east towers above the surrounding urban forest.



The Stationhouse

The Stationhouse constructed in 2006 is located at 1625 Tutwiler Ave adjacent to the trail. The design mirrors historic stationhouses located in

West TN in earlier times. It is used primarily to store equipment and a place where volunteers



meet for work groups. It is also used for two events—the Forest

Faire (a fall tree festival) and the V&E Greenline yard sale, held the end of June. Water and sewer still needs to be added to the Stationhouse.

Jeannie Richardson (right), State Representative for the V&E Greenline area, and former State Representative Mary Wilder (left), are shown presenting a state grant to the V&E Greenline for water and sewer.



The grant will cover a portion of the cost, with the remainder to be raised through community contributions. Representative Richardson was pleased to help nonprofits such as the V&E Greenline deliver services which are needed and desired by the neighborhood.

Remembering Dick Mochow

Long time committee member Dick Mochow died this year and a tree was planted in his memory adjacent to the Stationhouse.

Dick joined the V&E Greenline Committee in December of 1996 and was one of its most dedicated members. He had a special interest in environmental issues and was featured in an action photo below in *Rails-to-Trails Magazine* in 2004 leading volunteers planting trees along

the Greenline. He represented the V&E Greenline on the VECA CDC Board and was also a leader in that group. He will be missed.



Committee Members Needed

The V&E Greenline Committee directs the work on the V&E Greenline. The committee meets at 6:30 p.m. on Monday at 1625 Tutwiler on the following dates: February 11, April 14, June 9, Aug 11, and Oct 13. The committee needs new members—many of the current members have been on the committee for over ten years.

Finances

Income is primarily from contributions by the residents of Vollintine Evergreen and Evergreen Historic neighborhoods, and users of the trail. Income from contributions in 2007 was a record year for the V&E Greenline.

The annual contribution fundraiser will again take place in March of 2008 and contribution brochures will be distributed widely.

The V&E Greenline uses all of its funds for the Greenline. None of the officers, committee members, or staff are paid for their efforts.

The Greenline is the equivalent of a small business; it pays taxes, insurance, governmental fees, and many other maintenance costs such as gasoline.

Insurance costs were higher than previous years because of the need to insure the stationhouse and additional equipment. In order to further beautify the V&E Greenline for the users, in 2007 and 2008 more funds were allocated to trail maintenance. For example, a contractor was hired to weed eat the banks and entrances—a

task that the volunteers did not undertake regularly. In addition, some remaining construction costs for the Stationhouse were paid in 2007. A large dead tree near the stationhouse required the services of a contractor to cut down and remove, which was a costly item.

Volunteers

A number of new volunteers worked on the Greenline. Employees of Ernst & Young, as Hands on Memphis volunteers, spent a Saturday morning refinishing the V&E Greenline redwood signs—they sanded, cleaned, and stained every one of the distinctive signs.



Two new volunteers joined the Greenline as mowing volunteers—there are now a total of eight mowing volunteers. The Church on the Square led by Rev. Kenny Davis & Jeff Forbes spent an October Sunday morning helping clean the tree lined area adjacent to the Stationhouse.



Contacting the Greenline

- 1680 Jackson Ave, Memphis TN 38107
- Phone: (901)276-1782
- Email: VEGreenline@VECACDC.ORG
- Website: WWW.VEGreenline.ORG